



adaptiveARC

Energy that cleans

adaptiveARC provides compelling economic alternatives for biomass gasification and waste management. Our proprietary Cool Plasma Gasification™ technology is portable, modular and scalable. We provide technology and services that support a cleaner and safer world.

Cool plasma gasification

Plasma arc gasification generates the highest syngas yields and is recognized as the cleanest way to convert energy from biomass, waste or coal feedstocks. However, to date the process has been too costly. Our proprietary Cool Plasma Gasification technology changes the game and provides the same benefits at a 65% reduction in capital cost. The result is the most economically compelling gasification alternative in the marketplace.

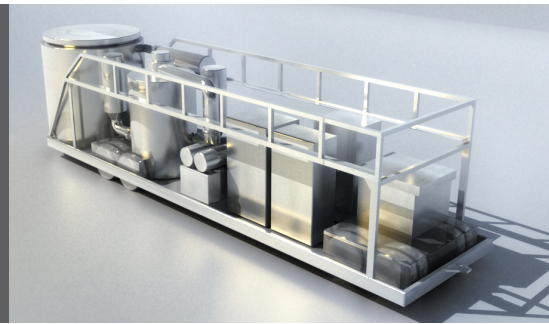
Reduces emissions, reverses damage

Integration with traditional landfill recycling provides 100% recycling. All adaptiveARC by-products are recyclable, from clean energy to commercial raw materials.

Cool Plasma Gasification does not create the gases or hazardous by-products associated with incineration or combustion. Unlike wind and solar, clean energy from waste gasification actually reverses the emissions and environmental damage of landfills. It significantly reduces emissions of the feedstock it consumes and the dirty power generation it replaces.

adaptiveARC is not just clean energy, it's energy that cleans.

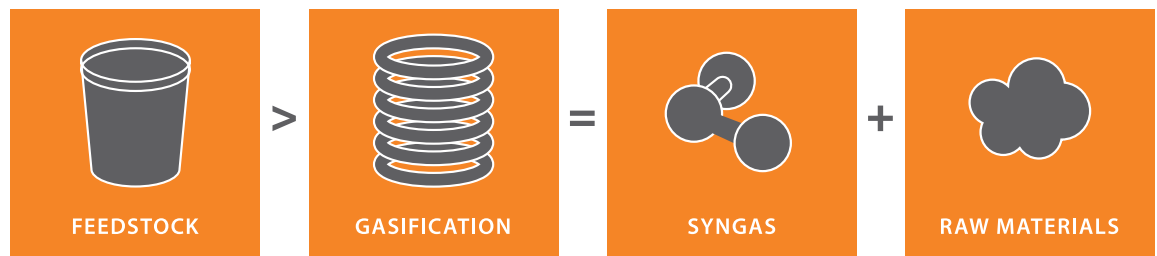
The Urban Class ce250 processor converts 250 to 2000 tons of feedstock per day in configurations that generate from 12MW to 48MW of electricity.



Clean, sustainable energy

Our processors cleanly and efficiently convert biomass, agricultural, municipal, coal and even toxic feedstocks into clean energy such as electricity, biofuels and hydrogen for fuel cells.

Sustainable energy is affordable. Our operating costs are below most average landfill tip fees.



Configuration	Feedstock throughput	Electrical output*	Application examples
ce25	25 tons per day	0.5-1.0 MW	mobile power, haz materials
ce100	100-800 tons per day	2 - 32 MW	small biomass + landfill
ce250	250-2000 tons per day	12 - 96 MW	medium biomass + landfill
ce1000	1000-8000 tons per day	34 - 512 MW	large biomass + landfill